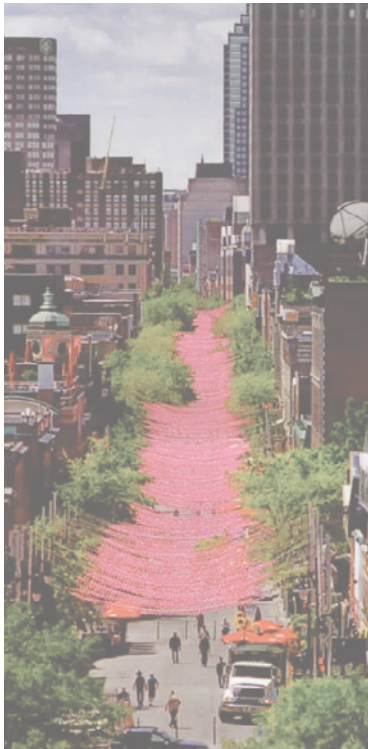
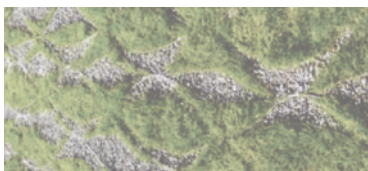


**EXPERIMENT 4 the Castañer Plaza . preparing a suitable kit of parts**

**TIMELINE (8 class periods)**  
**February 17,19,21,24,26,28**  
**March: 3,5**



Claude Cormier & Associés *Pink Balls* Installation for Aire Libre Festival in Montreal



PEG-O-LA *Edaphic Flow* Philadelphia

*“Everything has a possibility to be reinvented and it is a fantastic possibility”* Claude Cormier

What does public space informed by thermal modifications (Katzschner), the concepts presented in the image of the city (Lynch), color and they way Cormier & Associés engages it, and spectrum matrix/ different forms of intelligence (Clements and Dorminey) look like?

Cormier

- + color is extremely loaded, challenge pre-conceived ideas of that (a pool is always blue - right?)
- + reveal aspects by not covering them
- + idea driven playfulness
- Peg-O-LA
- + process and form are inseparable
- + larger scale organizations because of repetition can make certain processes legible

Lynch

- +legibility, landmarks, edges, paths, nodes, districts, the other and the sense of the whole
- +mystification, labyrinth or surprise in the environment
- +bring new depths to the everyday experience

Katzschner

- + people’s behaviour in dependence of the thermal situation

Clements & Dorminey

- +provide opportunities for engaging landscape experiences for all forms of intelligence
- + eight forms of intelligence: logical-mathematical, musical-rhythmic, bodily-kinesthetic, verbal-linguistic, visual-spatial, naturalistic, intrapersonal, interpersonal

Alexander

- +intuition is a designers greatest gift

Let your intuition, these readings, the remote research you will complete on the place and any other pertinent

information you may gather guide and inspire your intervention proposals for the plaza.

As per our brainstorming sessions these can be anything from programming - as Will DiBernardo stated yesterday “simplest form of intervention”, to furnishings including easily constructed and removable overhead structures.

We have 8 class periods between now and the day before we depart to Puerto Rico to engage on the design build workshop. It is our goal to bring something to inspire the community and to be inspired by them as we refine the kit of parts that will complete the whole. We have five days to construct, transport, and install our work.

There are six specific deliverable for each class period with the exception of Feb. 26 - a day to work as a group - ALL six deliverable must be printed for class to critic and evolve. All final work is to be uploaded to our PSEU website under the Field Experiment/Castañer tab.

**Deliverable I: Research & Analysis | DUE Monday, Feb. 17**

A complete analysis and research of the plaza and hamlet of Castañer. Using the photos in dropbox by the EA students, the web to find additional photos and videos, perhaps Olivia (5th yr.) and any other Castañer “veteran” (5th yr.) and each other define, model, and present evidence of:

1. climatic impacts on the site: solar effects on the plaza as modified by adjacent buildings, rainfall amounts in Castañer, wind patterns, and storm/hurricane issues
2. type of activities that take place in the plaza
3. problem areas as observed in photographs
4. textures, patterns, colors (imageability) and the identity, structure and meaning of the plaza and the hamlet of Castañer
5. generate a list of constraints - these shall inspire our work (these may include constraints for us as designers in this process and site constraints, etc)

### **Deliverable II Precedents | DUE Wednesday, Feb. 19**

Now that you have defined the constraints find three precedents that have with similar constraints and or have created a space or feature(s) within the space to achieve higher legibility via the use of either a landmark, a node, a path, an edge or the abstraction of a district. This should inform your future design intervention for the plaza. Think movable furnishing (mass produce 40 chairs-puzzle like pieces - domino tables), kiosks, planters, the use of trees, paint, water retardants (peg-o-la), chalk out a plaza design, etc.

### **Deliverable III: IDEA | Due Friday, Feb. 21**

Based on Kevin Lynch's Image of the City select a design intervention that addresses one of the following: landmarks, nodes, paths, edges,

1. the design intervention may not to exceed \$500 in materials cost
2. easy to fabricate and or piece together, transport and install (all in five days)

### **Deliverable IV: 3d Models rendered | Monday, Feb. 24**

This is a digital or physical model of your intervention

1. consider the propoerties of the material your intervention will be built off as you model it
2. if a programming intervention .model a year
3. size and materials are to be defined by you

### **Deliverable V: construction documents | Due Friday, Feb. 28**

You must be able to create drawings that can be used to build the intervention. Any digital patterns can be entered into the computer at the FAB LAB in PR and fabricated with accuracy.

### **Deliverable VI: final package | Due Wednesday, March 5**

#### **Requirements**

- Create a complete presentation package including how your analysis and research informed your precedent and that your idea for an intervention.
- Upload your complete document to weebly and print a hard copy
- Prepare a 3 min. verbal presentation (3 minutes per student - 2 minutes for feedback)
- Write a 150 word maximum design concept statement

**Departure to PR Thursday, March 6 - return March 18 | Class will resume Wed. March 19**

### **Grading rubric (20 points):**

You may obtain a maximum of 5 points for each of the following elements:

- followed all instructions and delivered on time . 5 pts.
- depicts utmost care and craft . 5 pts.
- achieved experiment's goal . 5 pts
- creative wisdom is displayed . 5 pts

### **References & Resources:**

*Behaviour of People in Open Spaces in Dependence of Thermal*

*Comfort Conditions* by Lutz Katzschner

*Notes on the Synthesis of Form* by Christopher Alexander

*From Pop-Up to Permanent | Small, nimble projects are adding value to public spaces* by JoAnn Greco

*Spectrum Matrix: Landscape Design and Landscape Experience* by Terry L. Clements and Sarah J. Dorminey